

HP® P1005 TO P1102 CONVERSION KIT INSTRUCTIONS



HP P1005 TONER CARTRIDGE

INSTRUCTIONS TO CONVERT AN OEM HP LASERJET P1005 SERIES TONER CARTRIDGE (CB435A) TO WORK IN AN HP P1102 PRINTER

By Mike Josiah and the Technical Staff at UniNet



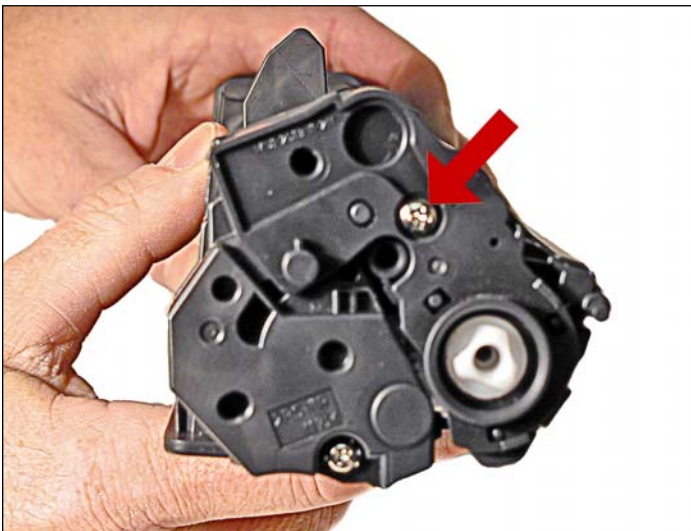
Items shown from Conversion Kit 14994

SUPPLIES REQUIRED

1. 14994 Conversion Kit
2. OEM HP CB435A toner cartridge core

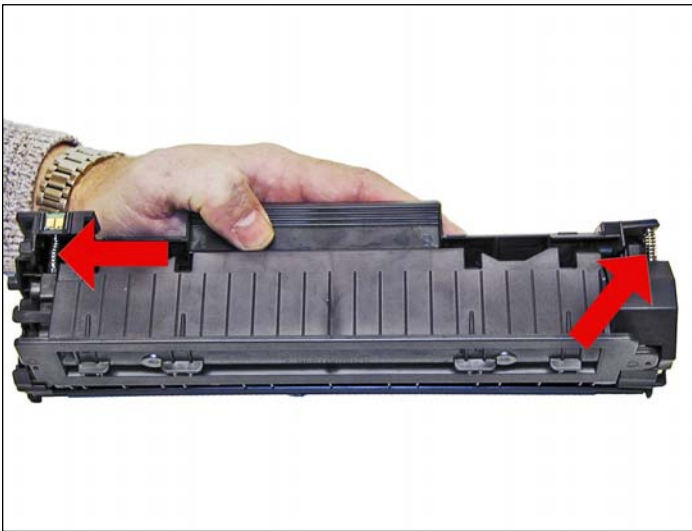
TOOLS REQUIRED

1. Phillips head screwdriver
2. Small common screwdriver
3. Needle nose pliers
4. Jewelers screwdriver set
5. Toner approved vacuum
6. Sturdy razor knife

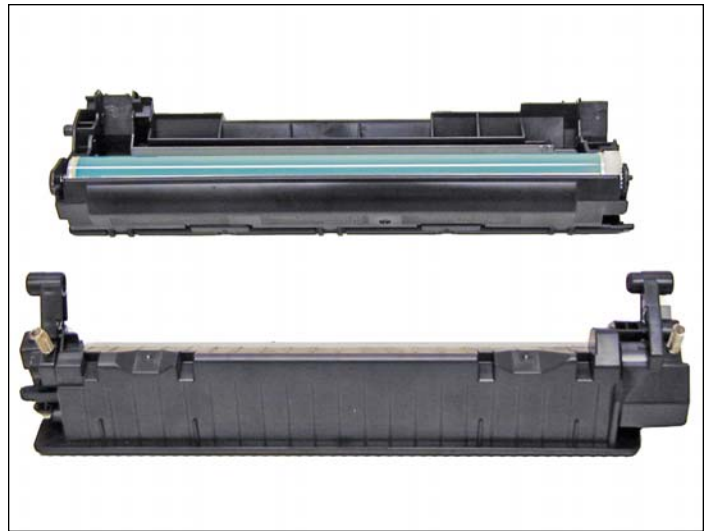


1. With the handle facing you, remove the right side screw and end cap from the cartridge.

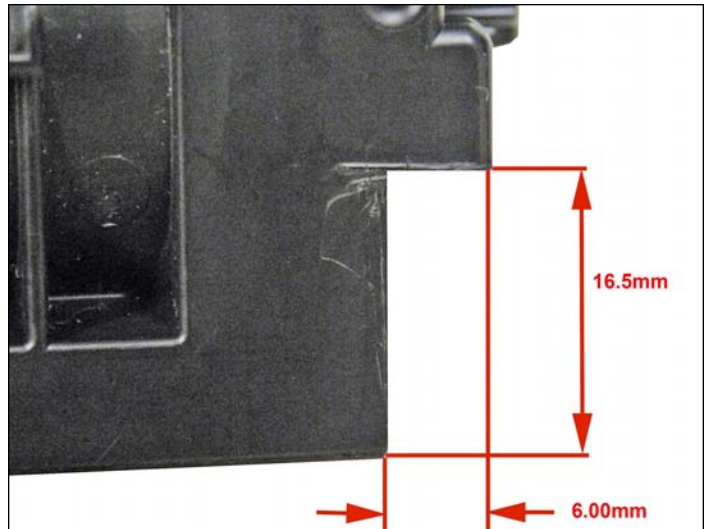
Be careful of the drum cover spring! Remove it with the end cap.



2. With the pair of needle nose pliers, release both the hopper tension springs.

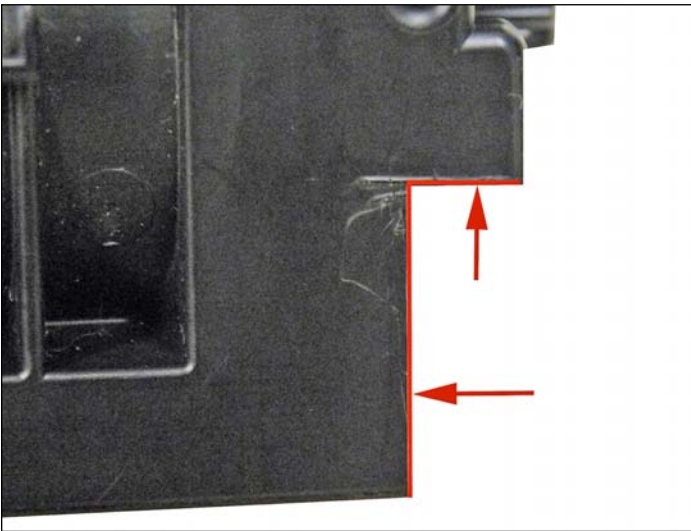


3. Slide the waste/drum section over to the left side. Separate the two halves. Remove the magnetic roller, left/right magnetic roller bushings, left/right magnetic roller wipers, all the gears, the left end cap, and the doctor blade from the supply hopper. Remove the OPC drum, PCR and wiper blade from the waste section. Clean all remaining toner from all the parts.

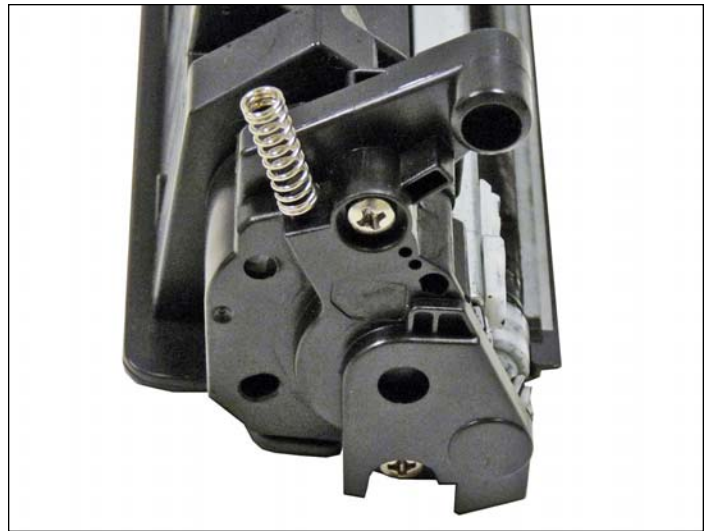


4. Cut a small strip of plastic off the left side of the OEM hopper to the dimensions shown.

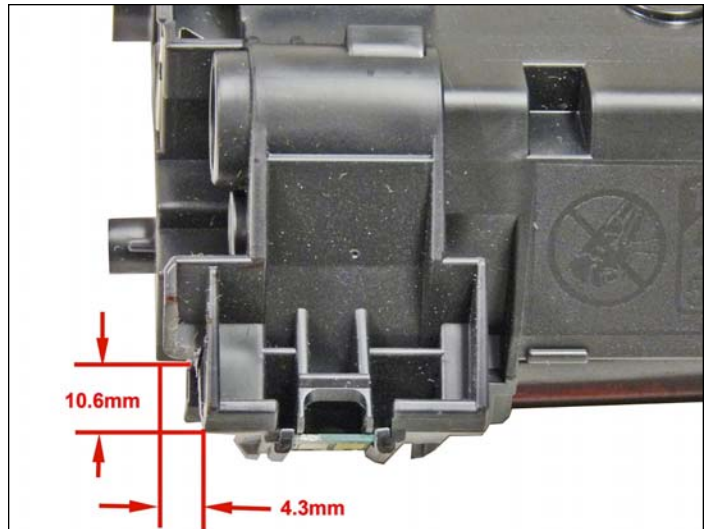
If this strip is not removed, the cartridge will not fit into the P1102 printers.



5. Cutting the strip off the cartridge may cause the seam of the hopper to open up. Re-glue the seam with polystyrene glue to re-seal the seam.



6. Refill and seal the toner hopper. Re-install the doctor blade, left and right mag. roller wipers, left and right mag. roller bushings, and gears back into the hopper. Install the new universal end cap onto the hopper.



7. Cut a small strip of plastic from the left side of the 35A OEM waste hopper as shown.

This section must be removed, or the cartridge will not fit into the P1102 printers.



8. Install the wiper blade, PCR and drum back into the waste hopper. Re-assemble the two halves and install the new drum bearing plate supplied with the kit. The conversion is complete!