

DELL® 1320CN

EASY TO REMANUFACTURE CARTRIDGE INSTRUCTIONS



DELL 1320CN TONER CARTRIDGE

REMANUFACTURING THE DELL 1320CN TONER CARTRIDGE

By Mike Josiah and the Technical Staff at UniNet



The Dell 1320CN cartridges are rated for 2,000 pages. The OEM part numbers are 310-9058 high yield Black, 310-9060 high yield Cyan, 310-9064 high yield Magenta, and 310-9062 Yellow. There is a chip that must be replaced every cycle.



1. Remove the black tape from the seam of the supply hopper and the waste chamber. Save the tape for use when re-assembling the cartridge.



2. Press in on the two tabs of one side as shown to release the waste chamber. It is sometimes helpful to press back on the waste chamber as the tabs are pressed in.



3. Remove the supply hopper cover.

Clean out any remaining toner from both chambers.



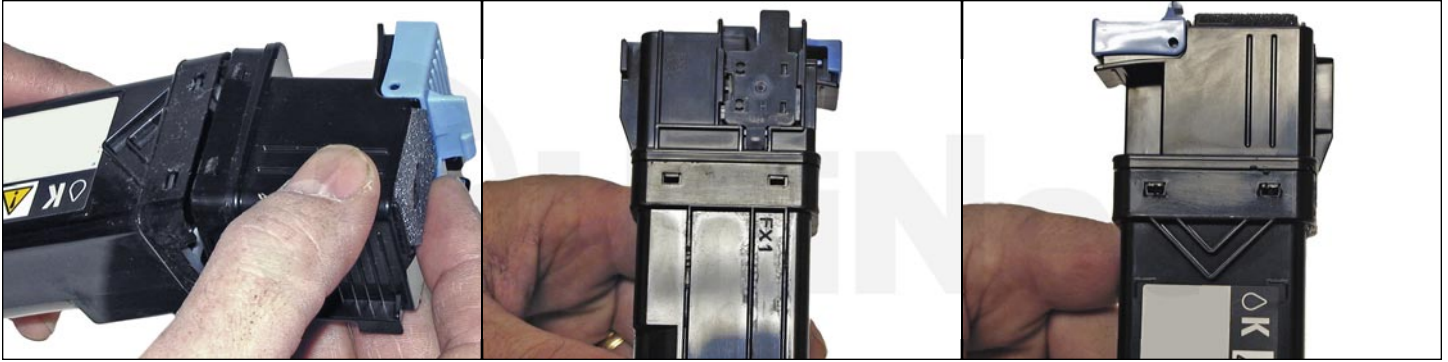
4. Fill the hopper with the appropriate color toner. Remember, while the cartridges all look the same, they are not interchangeable. Each color has a different set of plastic tabs.



5. Clean the plastic lip where the hopper cover sits of any toner.

Replace the cover.



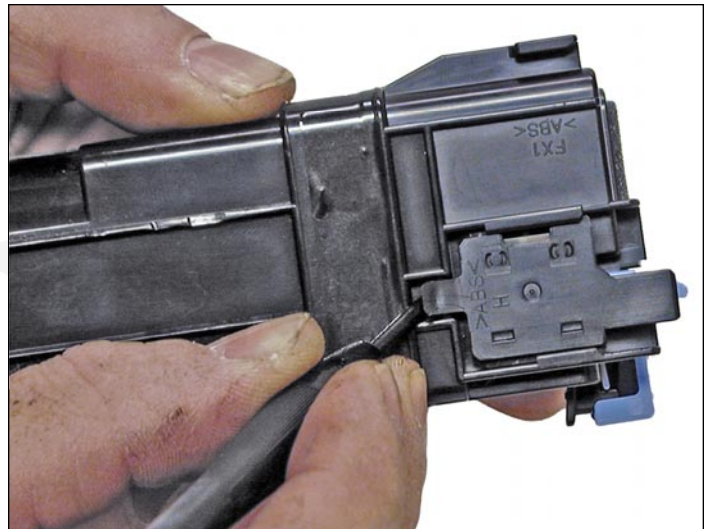


6. Install the waste chamber on to the supply hopper.

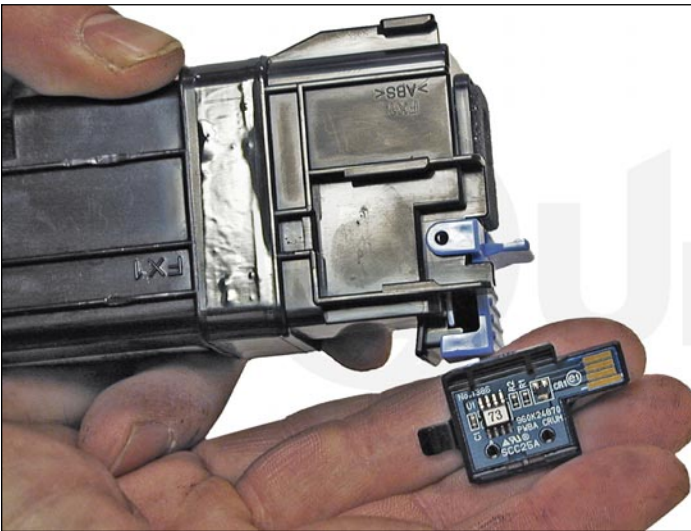
Make sure all four tabs are locked in place.



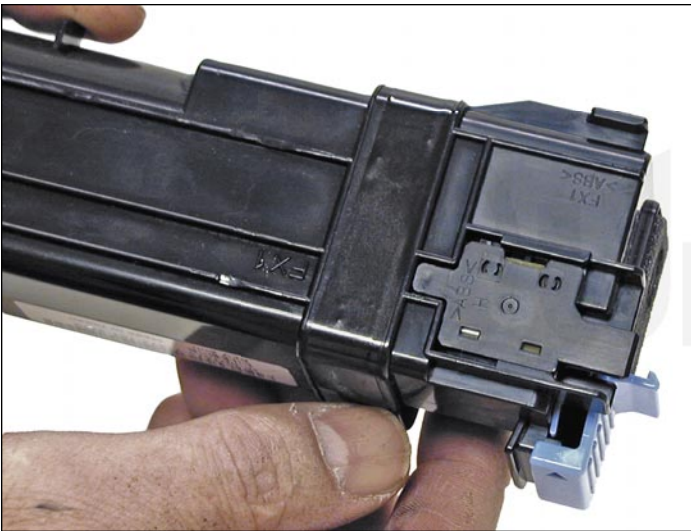
7. Re-install the black tape seal across the seam. If the OEM tape is not useable, good black rubber electrical tape (NOT the vinyl type) will work fine (toner will stick to anything made from vinyl).



8. Carefully pry up the plastic chip holder tab.



9. Slide the holder out of the cartridge and replace the chip.



10. Slide the holder back in place until the tab locks in place.